



Thomas Jin-Chee Liu ,Ph.D.

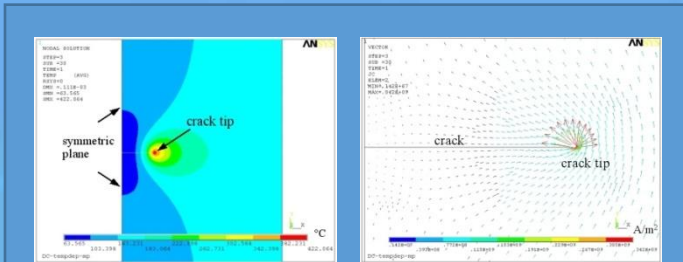
Position : Associate Professor

Phone : +886-2-2908-9899 Ext.4569

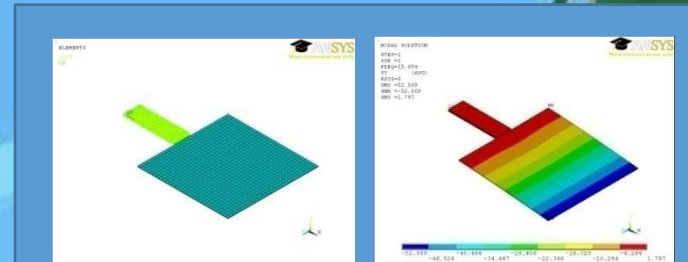
E-Mail : jinchee@mail.mcut.edu.tw

Education : Ph.D., National Cheng Kung University

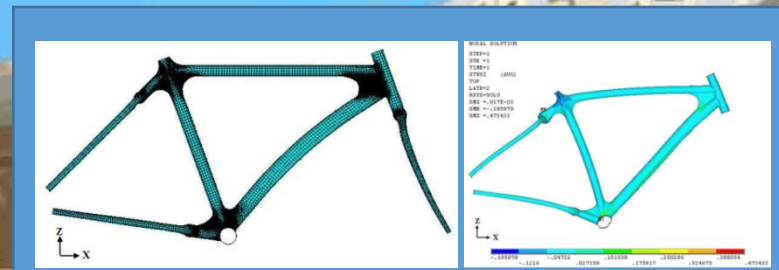
Research : Solid mechanics, damage mechanics, finite element analysis, computer-aided engineering analysis



Thermo-electro-structural effects of Crack problems



Piezoelectric cooling fan



Mechanics of composite materials