



Chen-Shane Chu ,Ph.D.

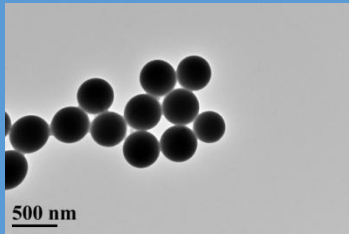
Position : Associate Professor

Phone : +886-2-2908-9899 Ext.4535

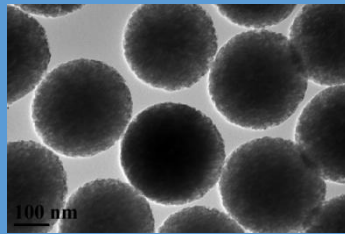
E-Mail : cschu@mail.mcut.edu.tw

Education : Ph.D., National Cheng Kung University

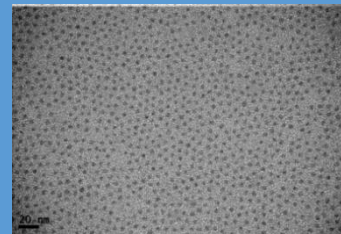
Research : Optical fiber sensors



Silica nanoparticles



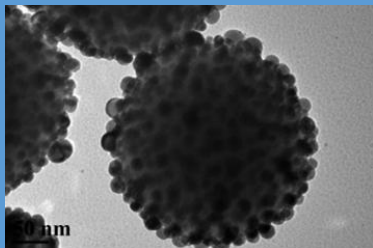
Porous silica nanoparticles.



Quantum dots



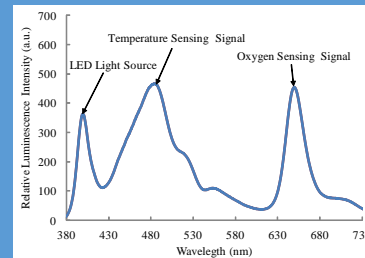
Portable optical sensor.



Portable optical sensor



Sol-gel thin fim



Portable optical dual sensor.

